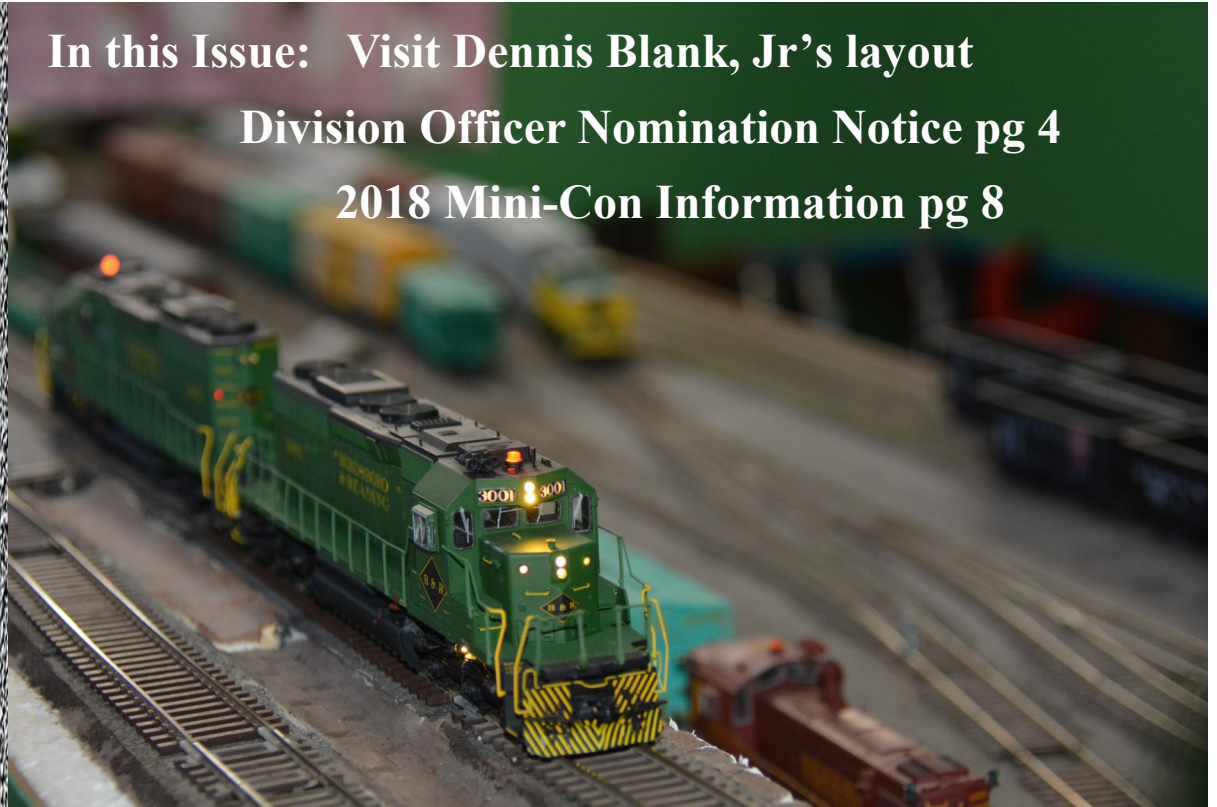


SUSQUEHANNA SIDETRACKS

An Official Publication of the Susquehanna Division,
Mid-Eastern Region of the NMRA
Vol 26 No. 2



In this Issue: Visit Dennis Blank, Jr's layout
Division Officer Nomination Notice pg 4
2018 Mini-Con Information pg 8



From the Superintendent's Desk – Tim Himmelberger

I would like to start off by first thanking everyone for your prayers and expressions of concern and support for my wife. She is improving, and we are seeing real progress. So again, thank you to everyone. As I sit writing, March is fast approaching. As I reflect over the past months I am sorry to say that I have not made the amount of progress on my layout that I would have liked. I hope each of you have had more success. We had a very good meeting on February 3rd in Lebanon. Please see the article on page 05.

Our next event is one we are co-sponsoring with the South Mountain Division. It is the Mini-con in Blue Ridge Summit. I would like to add that Brian and Bonnie Wolf of Mainline Hobby Supply support this event. As they do with many model railroad events. So please take some time to walk or drive across the highway and visit their store and thank them for their support. Lee Rainey is presenting a formal clinic in the afternoon and Wayne Betty will be bringing his timesaver layout for you to show your skills in the morning. Please see the article on page 08.

If you missed the February meeting, you missed the announcement of the May 5th event we have added to our calendar. It will be held at the new facility acquired by the Bricktown Model Railroad club in Mount Union. The program officer for this event is Lee Rainey. Don't miss the once-in-a-lifetime opportunity to tour the East Broad Top RR engine house in Mount Union and see the standard gauge 0-6-0 switcher housed there. That alone should make the trip worthwhile. Please see the article on pages 10 & 11.

We will have another special opportunity on June 9th. Jerry Britton has arranged for us to tour the Pennsylvania Rail Road Technical and Historical Society archives at the Lewistown Station. The date was chosen so that there should be excellent opportunities for train watching. Remember this is on the former Pennsy famed Middle Division. Since we are the guests of the PRRT&HS we will be limited in numbers to what they can handle. Having said that there will be a sign-up form in the next Sidetracks.

It is an even numbered year. So, that means it is time to elect our division officers again. Not only division officers but also Mid East Region officers. If you are interested in running for a regional office, please contact Bob Charles rcharles@aol.com For the division officer election please see the article on page 04.

One final thought, I want to encourage each of you to consider writing an article on any modeling topic for Sidetracks. Unfortunately, most issues are only announcements of upcoming events and recaps of events after the fact. While that is important we are a modeling group and articles on any facet of the hobby would be most welcome. If you think that you cannot write an article but have an idea we will get you the support and help that you need. We are still in winter and the official start of spring is a month away, excellent modeling weather.

Tim Himmelberger



Susquehanna Sidetracks

Official Newsletter of the Susquehanna Division
Mid-Eastern Region, NMRA
1168 Caspian Drive, York, PA 17404

Contributing to Susquehanna Sidetracks

Sidetracks welcomes contributions from the Division membership. Letters, articles, photos and other items may be sent to the Editor at the e-mail address listed below or the street address above. Deadline for submission for the next issue is April 10, 2018.

Board of Directors

2016-2018

Superintendent

Tim Himmelberger
timh@susquehannanmra.org

Asst. Superintendent

Wayne Betty
wsb@susquehannanmra.org

Chief Clerk

Paul Tice
director@susquehannanmra.org

Director

Barry Schmitt
director@susquehannanmra.org

2017-2019

Director

Dave Collison
director@susquehannanmra.org

Director

Lee Rainey
director@susquehannanmra.org

Director

Pat Mulrooney
director@susquehannanmra.org

Director/Membership

Chairman
Howard Oakes
director@susquehannanmra.org

Committee Chairman

Achievement Program**Chairman**

Robert Charles, MMR
director@susquehannanmra.org

Model Showcase Program**Chairman**

John Wissinger, MMR
director@susquehannanmra.org

Training Chairman

Alan Mende
director@susquehannanmra.org

Sidetracks Editor

Tedd Pounds
director@susquehannanmra.org

Membership Information

Susquehanna Division website:

www.susquehannanmra.org

Mid-Eastern Region website:

www.mer.nmra.com

National Model Railroad Association

8414 Gulf View Drive, Suite A & B

Soddy Daisy, TN 37379-2200

www.nmra.org

Second Section – Tedd Pounds

Hello everyone!

I encourage all members to consider submitting an article or some photos of your layout or modeling projects to our newsletter. Do you have something that you have discovered that may be of interest to others? Put something on paper, include a few pictures and we will make it work. All submissions should be formatted as Times New Roman font 12.

Thanks!

Tedd



New Members Jan - Feb 2018

Jack Basiago

State College PA

Benjamin Snyder

York PA

DIVISION OFFICER NOMINATIONS

It's once again time to ask for nominations for our three Division Officer positions. These positions are: Superintendent, Assistant Superintendent and Clerk (secretary / treasurer). Each will be elected for a two-year term from July 1, 2018 to June 30, 2020. To be an Officer, you must be a member of the NMRA, reside in the Susquehanna Division 11 area, and be at least 21 years of age. You may nominate yourself or another member you feel is qualified; however, in fairness to that individual please verify they would be willing to serve. If we receive more than one nominee for any of the Officer positions each will be asked to provide a short (200 words or less) bio-sketch that will then be provided to all members in the May edition of Sidetracks.

Some of our Officers have expressed interest in running for reelection. However, like any other election, all three positions are open for election. So please be positive, get your name placed on the ballot, and make your case for election.

The timeline for the 2018 Officer voting program is:

- * March 31, 2018: Submit nominations to Tim Himmelberger, Superintendent, either by phone at 717-228-9396 or email at timh@susquehannanmra.org.
- * April 15, 2018: Candidate bio-sketches due either to Tim by email (see above address) or USPS (19 Penny Lane, Lebanon, PA 17046). Short bio-sketches (200 words or less) required only if there are more than one candidate for any office. Please note that the April 15th date is so we can get it out in the May Sidetracks. We have been trying to make an effort to get Sidetracks out in a timely manner. Specifically, before the first of the month. So please be considerate as Tedd gets very busy putting together the newsletter and having it distributed in a timely manner. The suggestion is if you are nominating yourself submit your bio-sketch with your nomination.
- * May 1: Ballots and nominee bio-sketches (only if we receive more than one candidate for any position) sent to members in the May edition of Sidetracks for vote.
- * May 31, 2018: Ballots received by either email or USPS.
- * July 2018: Vote announced in July Sidetracks.

Please seriously consider running for a Division Officer position. Our annual programs are developed under the leadership of your Board of Directors (BOD) and all Division policies are approved by your BOD. Therefore, this is your opportunity to get involved in deciding the future direction of your NMRA Division. I know most members are very busy with job, family, hobby projects, and other community programs and therefore believe serving on our BOD would simply require too much time. On the contrary, our BOD only meets in person once per year – all other matters are handled by either email or phone. So once again, please give this important request your most thoughtful consideration. This is an excellent opportunity for you to have a direct say in how your Division is managed, and it does not require a great deal of your valuable free time. Please give me a call or send me an email if you have questions about the elections or our BOD operations at timh@susquehannanmra.org or 717-228-9396.

Tim Himmelberger

Susquehanna Division February 3, 2018 Meeting

Our first meeting of the year is in the record books and was well attended by our Susquehanna Division members!

Dennis Blank, Jr presented a very informative slide presentation of various projects, tools, and his many varied modeling interests! Great job Dennis!

The model showcase entrants are below, Thank you to everyone that presented something for the showcase!

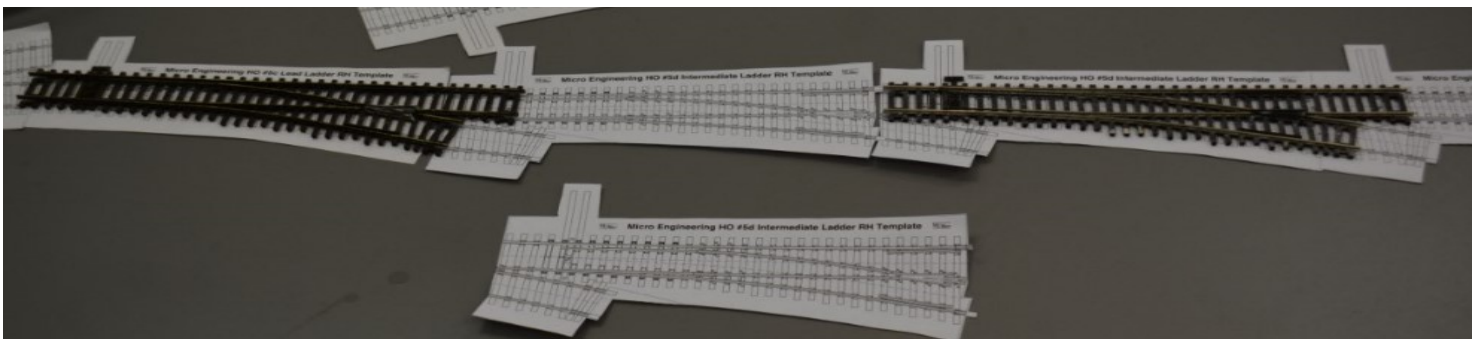
Scott Unger—displayed the two Athearn Blue Box locomotives below. On the right is a model being prepared for transformation. The model on the left began life as the model on the right!



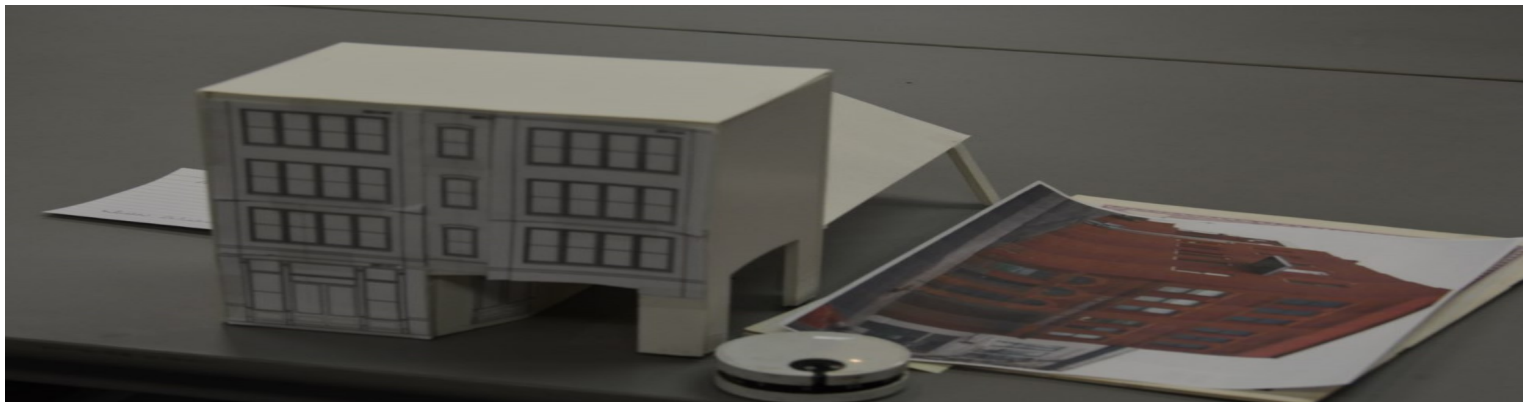
Dennis Blank, Jr - displayed his award winning work train from his freelanced Birdsboro & Reading Railroad. A fantastic model!



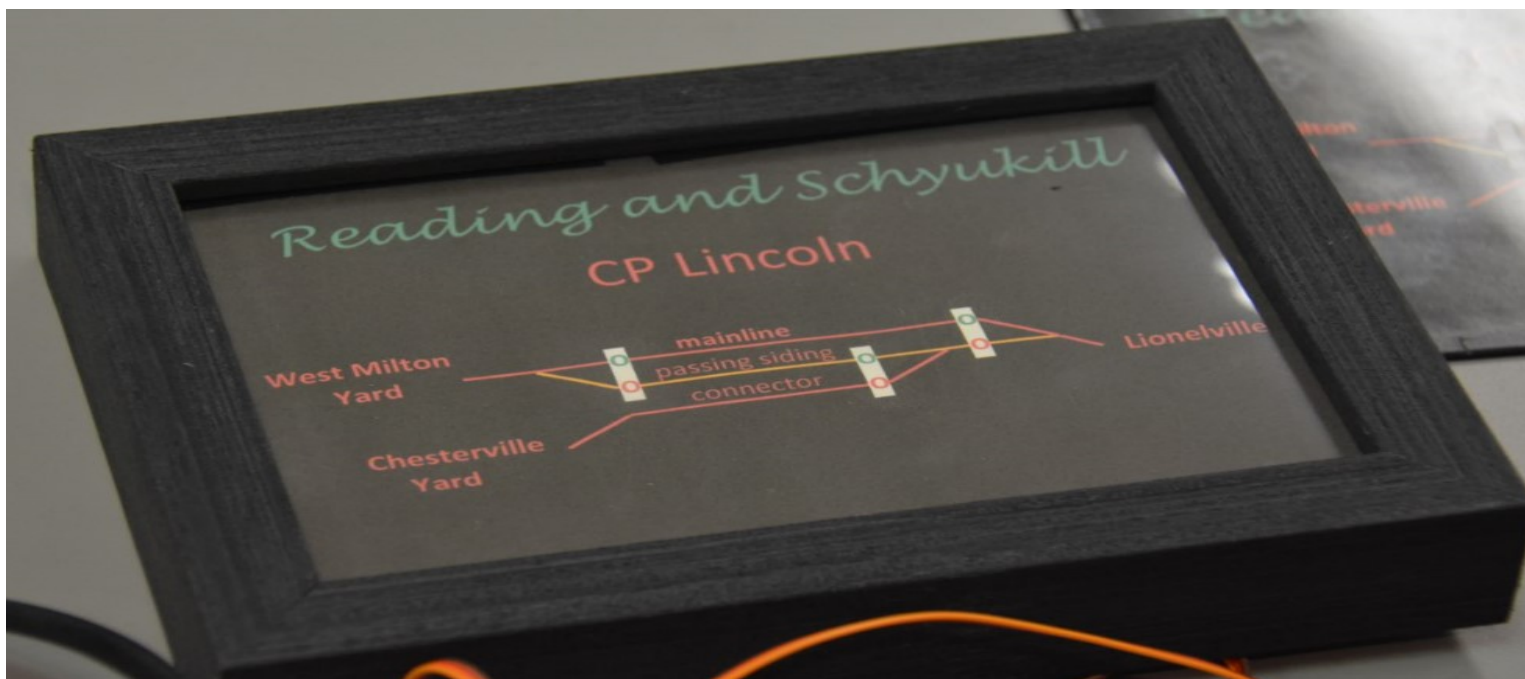
Tim Himmelberger—discussed the Micro Engineering switch templates for creating compacted yard leads.



John Wissinger— Interurban Depot mock up. Small town depot & office building inspired by the depot in Kalamazoo, ME built in 1903 by the Municipal Traction Company. Building was still in existence in 2010



Earl Frantz— On display are control panels using Berritt Hill Touch Toggles. These nifty little devices are triggered when you place your finger over the illuminated routing light, and the route changes. The LEDs come in bi-color (red/green) or you can get separate green and red LEDs. You can make a simple control panel using a small frame from a dollar store!



Three of our members opened their layouts after the meeting, they were;

Tim Himmelberger

Tim is in the construction phase after disassembling his old layout, the work is progressing well!

John Wissinger

John's layout is well along and continually evolving!

Dennis Blank, Jr.

Dennis's layout continues to grow as he works on many of the projects he discussed during our meeting!

I visited Dennis's layout, a freelanced Birdsboro & Reading Railroad. I am including a few photos I took of his layout below.



2018 Mini-Con

On Saturday, April 7, 2018, Mainline Hobby Supply presents: The SMD/SD Spring Mini-Convention. The meet continues to grow, and now in its sixth year the event will include support from the Susquehanna Division (SD). The doors will open at 9:00 am and close at 4:00 pm. Mark your calendar now for this popular event.

As in recent years, the Mini will be at the Blue Ridge Mountain Fire Co., located at 13063 Monterey Lane, Blue Ridge Summit, PA 17214. This venue is directly across the road from Mainline Hobby. Since this is a busy state highway, it is recommended that attendees park free to the north side of the fire hall nearest the convention entrance.

The 2018 event follows the same proven plan from the past. “Informal” clinics will take place in the morning. It is our intention to reprise the very popular make-and-take clinics. Trains will be running on some fine modular layouts. Plans also include a few vendors. Brian Wolfe, of Mainline Hobby is working to get a representative from ESU, maker of the Loksound line of sound decoders, to attend. As of this publication, SMD members Harvey Heyser, Ron Polimeni, Alex Polimeni, Andrew Dodge, Jane Clarke, and Frank Benenati have signed up to give informal clinics. Wayne Betty and Lee Rainey of the Susquehanna Division have also offered to present. Throughout the day we are raffling chances for a gift certificate for Mainline Hobby Supply!

In the afternoon all the activity in the hall is halted and formal clinics will commence. These presentations begin with Lee Rainey. He will speak on the topic, “Shortline Operating Patterns.” Lee’s clinic will help us understand how railroads decide what trains to run and when. That’s information which can directly impact how you design your own model railroad. Next up, Steve King will speak to the topic, “Expanding the horizons of your model railroad; Making it more guest friendly by adding operations.” Well, he assures me he will not use the title as I’ve suggested, but that gives you an idea of the track his talk will take.

Food will be available on site. However new this year, all eats will be supplied by Venturing Crew 97. Last year the troop only sold morning and afternoon snacks. This April they’ll handle all food and drink. So eat well knowing you are supporting a Waynesboro, PA area youth community organization.

It’s very important to note that all of this is possible for two reasons. The **first** is because, for the past five years, Brian and Bonnie Wolfe of Mainline Hobby Supply have rented the hall for our mini-convention, supplied massive advertising, and have given the SMD any other assistance that we needed. They have offered to do it again in 2018. Folks, when you go to Mainline Hobby Supply, please say thank you to Brian and Bonnie and purchase something. While the Wolfe’s promote and support the event, it’s me, Pete Clarke, who organizes it. So if you have any questions please do not bother Brian and Bonnie. They are busy running the store. Contact me directly.

And **second**, the Mini -Con happens because of volunteers like you, the members of the South Mountain and Susquehanna Divisions who offer to give informal clinics, show up early to set up the hall, run the make-and-take clinics, greet attendees at the registration table and do the 101 other things that come up before and during the event.

While this all sounds good, we still need more SMD/SD folks to contribute. So please contact me, Pete Clarke, to sign up to give a clinic. Don’t know what to do? It can truly be as simple as just bringing a model or project to work on. People love that. Honestly. Model railroaders are interested to see what you are working on, and they will want to stop and ask you about it. If you ask anyone who’s done this in the past, they will tell you it’s **fun**. Our format does not require you to be comfortable with public speaking. You are just sitting at a table talking to only a few people at any time. There is no need to memorize a speech. It’s just chatting about a part of the hobby that interests you.

I also would like to encourage local more clubs and railroad historical societies to join us at the Mini. We will allocate space for them to inform the public, solicit members, and ask for donations. I am aware of the following: Brunswick Heritage Museum, Cumberland Valley Model Railroad Club, Four County Society of Model Engineers, Frederick County Society of Model Engineers, Hagerstown Model Railroad Museum at Antietam Station, Hagerstown Roundhouse Museum, Quincy Village Model Railroad Club, Rockville Model Railroad Society, Waynesboro Model Railroad Club, and the Winchester Model Railroad Club. If you know of the best email contact for these

groups please let me know. Or, if you know of additional groups please pass that information along with a contact email address.

So save the date (Saturday, April 7, 2018) and contact me, Pete Clarke, to reserve your place in the fun. Do it now! Floor space in the hall is limited and you won't want to miss out. Plus, if you all volunteer now then you won't have to listen to me appeal for more folks in the future!

Additional information will follow in the spring edition of the SMD *Wheel Report*.

Thanks,
Pete Clarke
Ebtmx5@aol.com
(301) 253-4913



Some photos from last years Mini-Con!



Additional Division Event

We've added a new event to this year's division calendar. Mark your calendars for Saturday, May 5th for the Bricktown Model Railroaders NMRA Open House.

The event takes place in Mount Union, PA. Mount Union is on the main line of Norfolk Southern, about 80 highway miles west of Harrisburg. In the last century, it was the largest shipping point on the Pennsy's Middle Division, because it was the site of three huge brick plants, also served by the East Broad Top narrow gauge. Hence the town's nickname: Bricktown.

Mount Union – still Bricktown to its citizens – is today the home of a vibrant model railroad community. Last fall the Bricktown Model Railroaders Association completed the purchase of a 50-foot by 100-foot former warehouse – complete with railroad siding – as their new club headquarters. They've invited our division to come and learn more about their plans and to sample model and prototype railroading in Mount Union.

The meet will be headquartered at the Bricktown Museum, 300 West Small Street, Mt. Union. Doors will open at 9:00 am and the program starts at 10 am. Here's what you'll enjoy at the club headquarters (in addition to donuts and coffee):

- 10:00-10:30 Welcome and walking tour of club building and layout plans.
- 10:30-11:15 Profusely illustrated slide presentation by noted author and historian Bryan Donaldson on Mount Union and its railroad past.

Then we break and let you tailor your own afternoon from the following menu of activities around the Mount Union community.

- 9:00-4:00 On30 modular layout of George Sarra, in club building.
- 11:15-12:30 Walking tour of remains of Harbison Walker brick plant (once the largest of its kind in the world), adjacent to the club building
- 11:30-4:00 Outdoor large-scale layout of Doug Renninger (weather permitting).
- 11:30-4:00 Outdoor large-scale layout of Bud Parks (weather permitting).
- 1:00-4:00 Outdoor large-scale layout of Jon Clark (weather permitting).
- 1:00-4:00 Wade Woodcock's HO/HOn3 layout.
- 1:00-4:00 Jon Clark's On30 layout.
- 1:00-4:00 Mount Union Area Historical Society Industrial Museum
- 1:00-4:00 And rarest of all, a chance to tour the East Broad Top engine house in Mount Union, home to EBT 0-6-0 #3, a 1923 Baldwin steam locomotive.

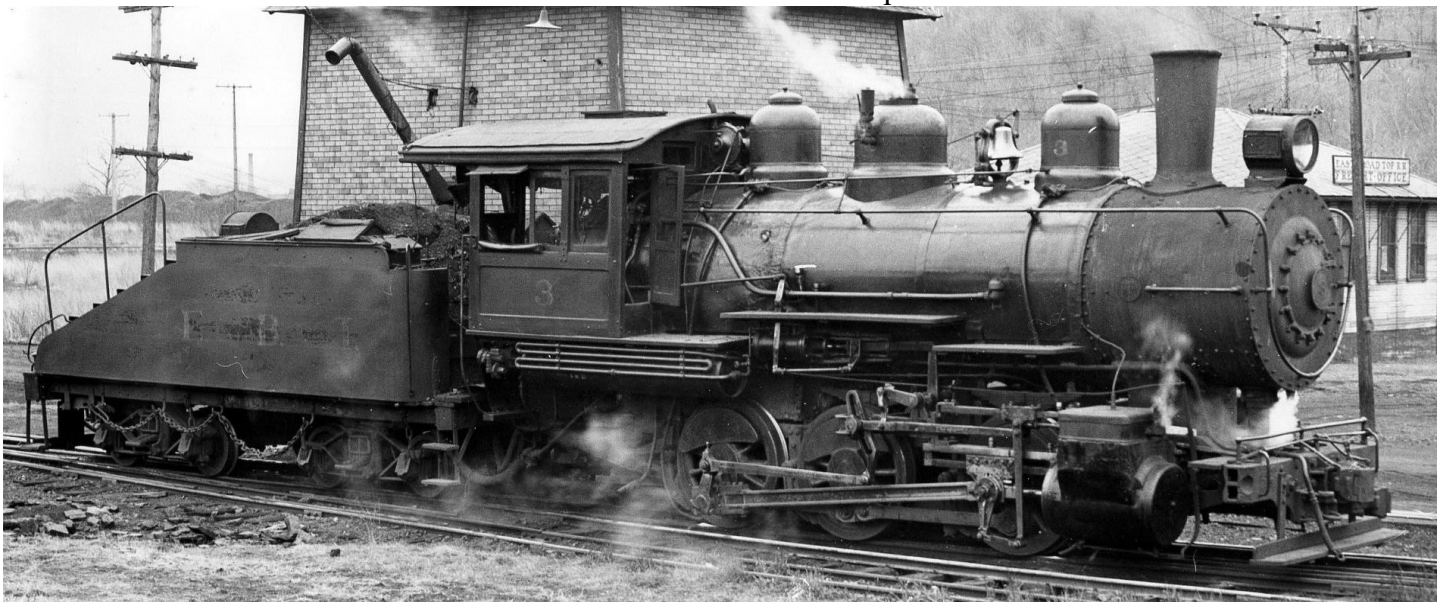
Lunch will be served in the former PRR Freight Station, now Mount Union's Senior Center. It will be available from 11:00 to 3:00 pm. The format will be cafeteria-style, featuring hot dogs with kraut, sloppy Joes, baked beans, potato salad, macaroni salad, ice tea, soda, coffee, and baked goods.

And of course, expect lots of action on the Norfolk Southern main through the heart of town.

We hope to see you in Bricktown !



Senior Center Ex PRR RR Depot



E.B.T #3 to be on display



New home of the Bricktown Model Railroad Club



★ Bricktown Museum - 300 West Small Street



LAST CHANCE

2017 M.E.R. – N.M.R.A. CONVENTION CAR

PUBLICKER-WARD DISTILLERIES TANK CAR

TICHY TRAIN GROUP KIT

\$18.95 + \$7.50 SHIPPING (up to two cars)

Send check to

Susquehanna div.

206 Stoever Dr.

New Holland, PA 17557

Welcome to the NMRA, Northeast Region's 2018 Regional Convention

NER Convention



Mahwah, New Jersey
September 13-16, 2018

The Erie Limited 2018

September 13 through 16, 2018

Co-hosted by the Garden State Division and the Hudson Valley Division of the NMRA



WELCOME TO THE GARDEN STATE
DIVISION

*Celebrating 50 years of service to
our members*

The Division is your local contact with
the NMRA.



The GSD comprises of the following counties of New Jersey. Sussex, Passaic, Bergen, Hudson, Essex, Morris, Warren, Hunterdon, Somerset, Union, and Middlesex plus Richmond county of New York.

Although our members reside in the northern counties of New Jersey and Staten Island, NY (the southern-most area of the NMRA Northeastern Region).

We invite NMRA members from all other divisions to attend our meets and special events as we are invited to theirs..

**National Model Railroad Association
Mid-Eastern Region
2018 Convention**

Crossroads of the MER



***Clinics ▪ Banquet Speaker—Lou Sassi
Contest & Modular Layouts ▪ Operations Call Board
White Elephant ▪ Contest & Display
Banquet & Awards ▪ Prototype & Layout Tours***

**October 4-7, 2018
Rockville Hilton Hotel
1750 Rockville Pike
Rockville, MD 20852**

***For the most up-to-date information visit:
<http://www.potomac-nmra.org/MER2018/>***



The Susquehanna Division participates in **The Model Railroad Open House**, held every November. The open house includes layouts in the Susquehanna, New Jersey, and Philadelphia divisions and, this year, we are welcoming the Garden State and South Mountain divisions. Hundreds of layouts over the four weekends of National Model Railroad Month!

You can learn more about the open house on the Division's web site at <http://susquehannanmra.org/Open%20House/Openhouse.html>

The open house schedule will be posted October 1st.



March 23 –25

Railroad Prototype Modelers Meet
One Liberty Blvd.
Valley Forge, Pa
Admission \$35.00 per person
Contact: Paul Backenstose 610-269-2763
WWW.RPMVALLEYFORGE.COM

April 7

MER/South Mountain Division, Susquehanna Division
And Mainline Hobby Supply 6th Annual Mini-Con
13063 Monterey Ave
Blue Ridge Summit, Pa
Admission: Free
Contact: Don Florwick 414-0660

May 9—12

Pennsylvania Railroad Technical & Historical Society
50th Anniversary Annual Meeting
1 Convention Center Drive
Altoona, Pa
WWW.PRRTHS.COM

JAMES RIVER RAILS

Operations Weekend

October 19 – 21, 2018



- **Choose up to 4 operating sessions over 3 days on layouts located in the Richmond and South-Central Virginia area**
- **Model scenery including West Coast, Great Plains, and East Coast**
- **Train movements via TT/TO, CTC, sequence schedule, and more**
- **Operations ranging from mainline “fast paced and disciplined” to branch line “relaxed”**
- **All layouts DCC controlled – throttles will be provided**
- **Something for everyone!**
- **Advanced registration required**

For More Information and Registration:

www.JamesRiverRails.org

PIKE ADS

*The Standard Railroad of the World
Meets the Narrow Gauge of the East*

Modeling the Pennsylvania and East Broad Top Railroads in S/Sn3

Visitors welcome by appointment
Lee Rainey • leerainey@aol.com



Masonic Village & Elizabethtown
Model RR Club

Meets 7:30 PM First Tuesday
Sept—June

One Masonic Drive
Elizabethtown, Pa 17022
Phone 717-361-5180

Open Houses the first weekend
monthly Sept thru April
Sat-Sun 2 –4 PM

Extra times at Christmas



B&O WESTON SUBDIVISION (Under Development)

Barry W. Schmitt, Superintendent
405 Ford Drive
Elizabethtown, PA 17022

(717) 877-1810 sbschmitt@comcast.net

THE BALTIMORE & OHIO RAILROAD

PRR Panhandle Division

George Pandellos Chief Engineer
Member: NMRA, TCA, PRRT&HS
717.503.3192 gpandellos@verizon.net

THE CENTRAL RAILROAD COMPANY OF NEW JERSEY

1:87.1 DIVISION – ALAN MENDE, GEN'L MGR.

306 MANADA GAP ROAD, GRANTVILLE,
PENNSYLVANIA 17028-8824

PHONE: (717)-469-1047
EMAIL: ALANMENDE@YAHOO.COM

SHORT LINE

ESTD 1989



≡ MODEL RAILROAD CLUB ≡



FORKS RIDGE RAILWAY



Gary P. Nastase-President & CEO
Kathleen A. Nastase-Train Wifey
207 State Street
Woodbury, PA 16695

Route
of
the
Whitetail

Pike Ads are available for \$10 for a 6- issue year. For information about placing an ad, please contact Tedd Pounds at tpounds@susquehannanmra.org

PLEASE SUPPORT OUR BUSINESS SPONSERS!

The Station



**213 Ninth Street
New Cumberland, PA
Phone: 717-774-7096**

Please call for directions

Open Monday-Friday 10 AM to 5 PM

Saturday 10 AM to 4 PM

TRAINS EXCLUSIVELY

ALL GAUGES (G-O-027-HO-N-Z)

Sales & Service

PLEASE SUPPORT OUR BUSINESS SPONSERS!

MAINLINE HOBBY SUPPLY



15066 Buchanan Trail East
Blue Ridge Summit PA 17214
(717) 794-2860
Monday-Friday 10-6
Saturday 10-5
Sunday 1-5

www.mainlinehobby.net

Serving the hobby for over 25 years!!

You're one-stop source for all your model railroading needs.

From Z to O, from DCC to Detail Parts, we have it all!

e-mail: mainlinehobby@comcast.net

Susquehanna Sidetracks

Official publication of the Susquehanna Division 11
Of the National Model Railroad Association

1168 Caspian Drive
York, Pa 17404